

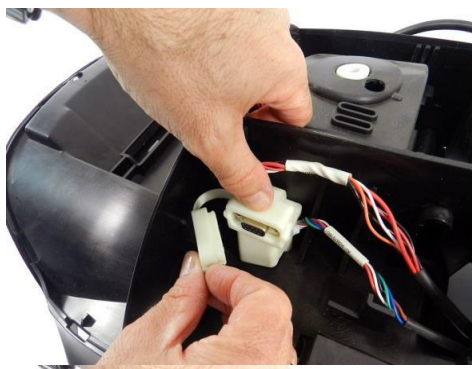
Procedure for installing GSM Module in RcMcTc Models



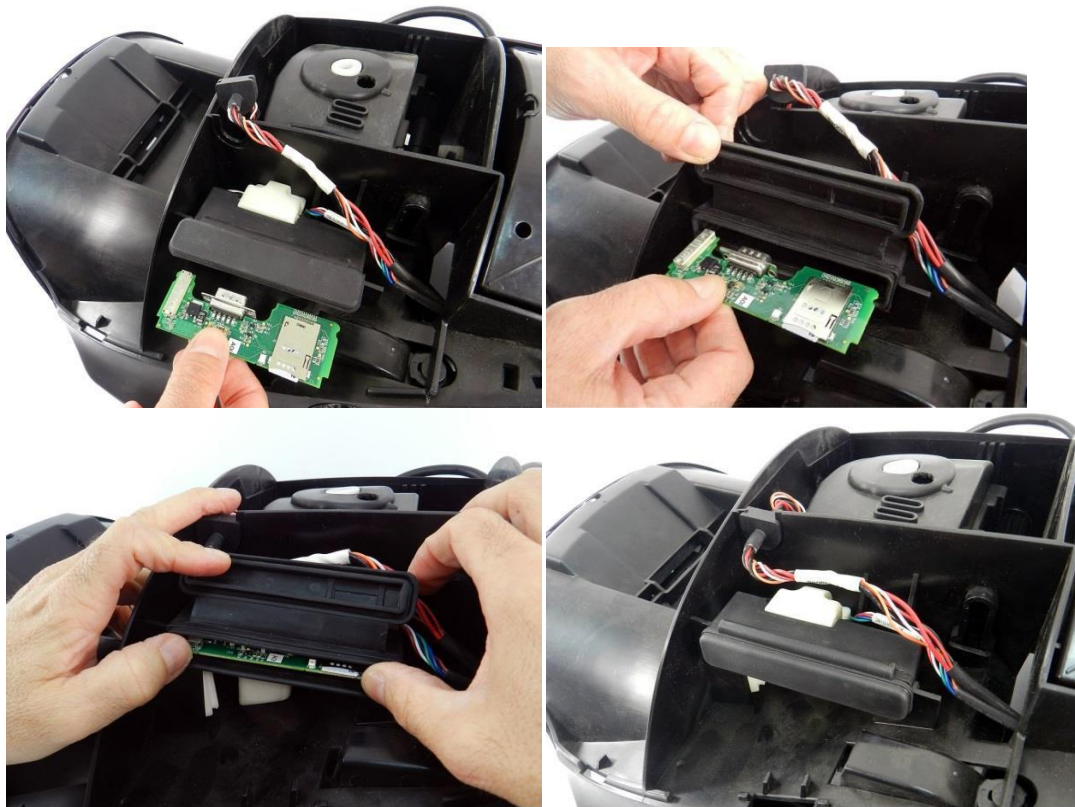
First switch off the Robomow with the main switch on the back side of the mower.



Remove the knife from the Robomow and remove the robomows top cover by pushing the green clips on the third Photo



Install the modules' housing like shown in the pictures above



Now insert the module in its housing like shown in the pictures above

Now Contact The robomow Contact Center in your Country over the telephonenumber mentioned at the bottom of our homepage in your country.

The module must be installed in the software of the Robomow.